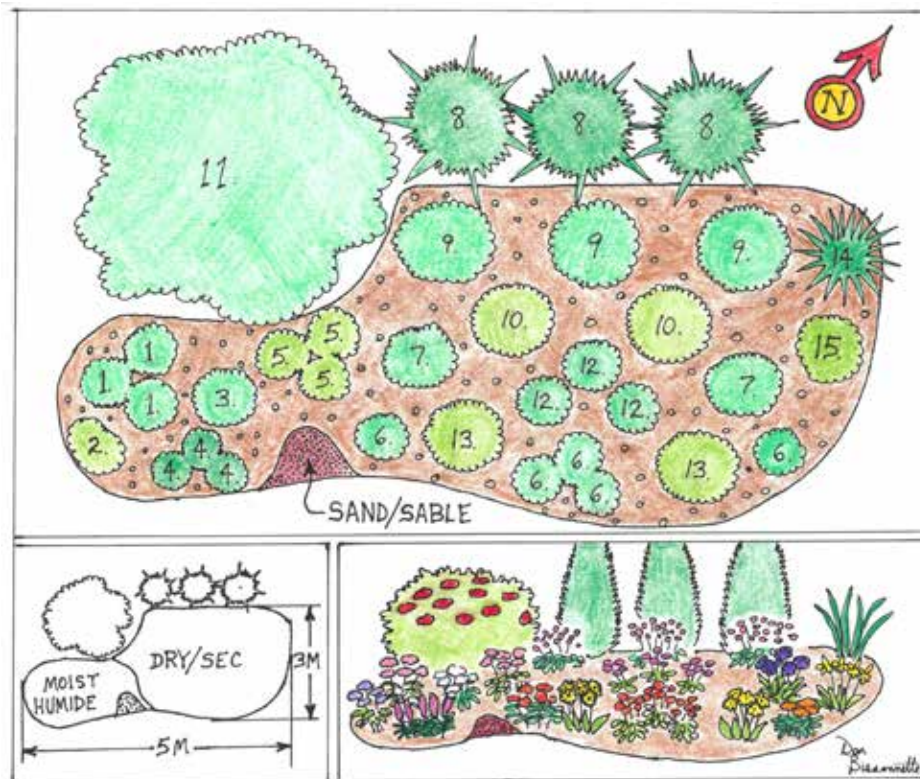


# Recipes for Restoration Butterfly Bonanza

Butterflies prefer groupings of flowers, with trees or shrubs nearby to provide shelter from excessive heat and wind. Since butterflies are attracted to many drought tolerant perennial wildflowers, a butterfly garden offers a great, low maintenance alternative to traditional gardens.

- Select a site that provides sunny exposure, good drainage and some nearby trees or shrubs for shelter.
- Remove the layer of turf and work up the soil to a depth of at least 20 cm.
- Amend the soil with compost or other organic material.
- Plant a number of native perennials, preferably those that offer different flowering times throughout the year. Space plants according to their respective height and width when mature.
- Water immediately.
- Provide aftercare in the form of additional watering and weeding.



*Sample Ingredients: Asters, Black-eyed Susan, blazing star, Boneset, Butterflyweed, goldenrod, Joe Pye Weed, Purple Coneflower, Swamp Milkweed, Tall Ironweed, Wild Bergamot, Woodland Sunflower*