



Common Forest Lichens



Hypogymnia physodes
Monk's hood



Platismatia glauca
Rag bag



Parmelia sulcata
Powdered shield



Lobaria pulmonaria
Lungwort



Peltigera aphthosa
Freckle pelt



Peltigera neopolydactyla
Frog pelt



Alectoria sarmentosa
Witch's hair



Bryoria fremontii
Speckled horsehair /Wila



Cladonia species
Pixie cup lichens



Usnea lapponica
Powdered beard



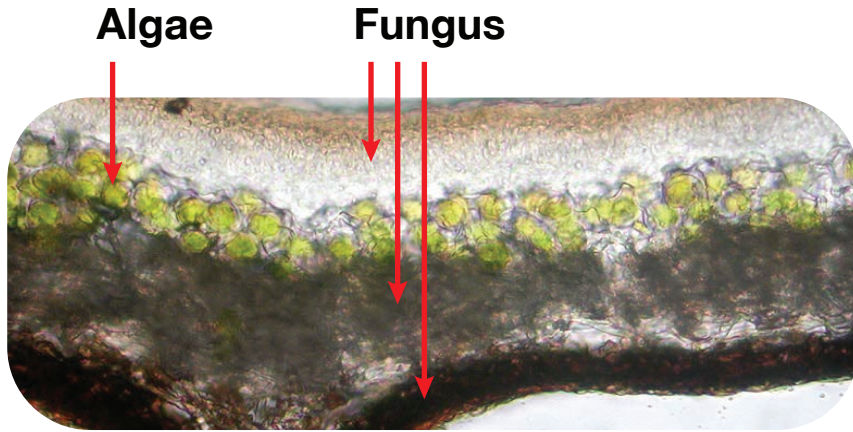
Parmeliopsis ambigua
Green starburst



Icmadophila ericetorum
Fairy upchuck

What is a lichen?

A lichen is a symbiotic association of a fungus with a photosynthetic partner (algae or cyanobacteria).



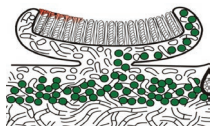
Algae

Fungus

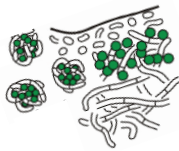
“Lichens are fungi that have discovered agriculture”

-Lichenologist Trevor Goward

How do lichens reproduce?



Apothecia (spore houses)



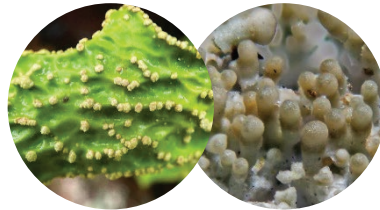
Soredia (powdery bits)



Isidia (peggy bits)



Sexual reproduction



Asexual reproduction

Cladonia species (includes pixie cups)



Apothecia

Podetia (stem with top)

Squamules (leafy bits)

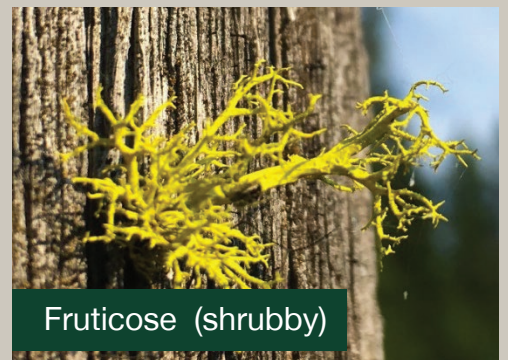
Types of lichen



Crustose (crusty)



Foliose (leafy)



Fruticose (shrubby)

Images: Chris Ellis (cross-section), M. Piepenbring (illustrations), Peter Kerrawn (apothecia), Richard Droker (isidia), Mike Lewinski (red cladonias), Fern Blasy (all others)